



LANDSCAPE SOLUTIONS

AUSTRALIA'S LEADING MASONRY MANUFACTURER

From the front driveway to the backyard entertaining area, Adbri has a paver for every application.

This selection guide contains information and inspiration to help you choose the best product for your paving project.

Paving is the foundation of an outdoor space and can be used to extend family living areas by creating new outdoor rooms, linking your home together with paths, reclaiming unused land with stepping stones and to build driveways that will leave a lasting first impression of your home.

Enhance your home with a paving solution from Adbri Masonry.



ES G EXPERT

Landscaping expert! Jason shares his expertise as a landscaper and more recently, an award-winning landscaper. Learn from Jason and look out for his tips to get the most from your outdoor space.

ADD VALUE TO YOUR PLACE THIS WEEKEND

Add life to unused spaces

STEPSTONE PATH



Extend your living space
with a new outdoor room

PAVED COURTYARD

For the full range of my hints, tips and DIY videos
visit us at adbrimasonry.com.au/diy



Euro® Stone

The Euro® Stone range is a popular choice for alfresco areas and outdoor rooms. The on trend palette of greys providing ample opportunity to complement the wider landscape design.

A gentle shotblast to the paver surface exposes the natural granite and marble stones within, producing a light sparkle in sunlit areas.

‘I love the textured feel that this architecturally inspired paver adds to outdoor spaces.’

Jason Hodges | Landscaping Expert



RECOMMENDED FOR



Courtyards



Paths



Steps



Pool Surrounds



Driveway Safe*

*When laid onto a suitable concrete base.

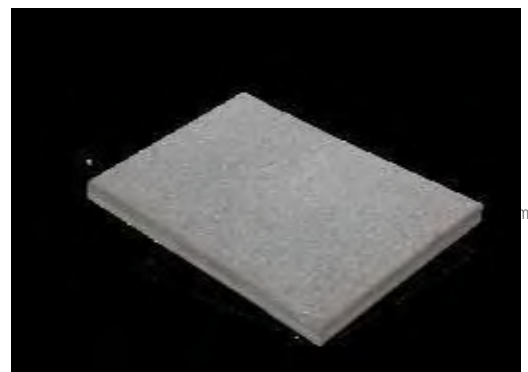
AVAILABLE SIZES



6.25 units per m²



Euro® Stone Sharknose
For pool coping and steps



4.16 units per m²

600X400 SIZE IS ONLY AVAILABLE IN THE PRAGUE AND ZURICH COLOURS



Euro® Stone | mixed colours & sizes



COLOUR OPTIONS

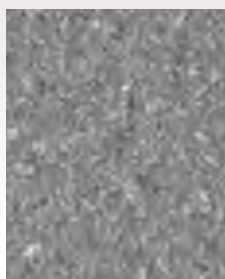
RIVERINA



ZURICH*



PRAGUE*



Whilst these swatches provide a good indication of the products colour, you should always sight product samples before use. Due to natural variations in aggregates, colours may vary.

*600 x 400 only available in Zurich and Prague

Euro® Classic

Euro® Classic pavers boast a traditional pressed surface texture which features a light texture ensuring suitable resistance to slip, making these pavers ideal for all external paving applications.

The smooth, flat surface means these pavers are easy to clean and maintain, ensuring aesthetic appeal over time.

RECOMMENDED FOR



Courtyards



Paths



Steps



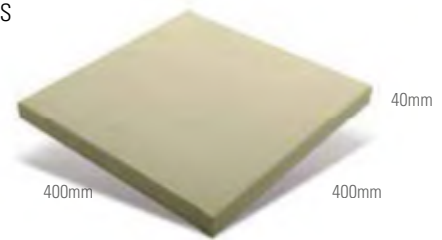
Pool Surrounds



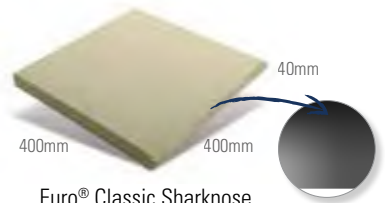
Driveway Safe*

**When laid onto a suitable concrete base.*

AVAILABLE SIZES



Euro® Classic
6.25 units per m²



Euro® Classic Sharknose
For pool coping and steps

2.50 units per lineal metre

**This product is made to order, lead times apply.*



Euro® Classic 600x400
4.16 units per m²

600X400 SIZE IS ONLY AVAILABLE IN THE PRAGUE AND VIENNA COLOURS



Euro® Classic | Cyprus



COLOUR OPTIONS

CYPRUS



ATHENS



VIENNA*



PRAGUE



Whilst these swatches provide a good indication of the products colour, you should always sight product samples before use. Due to natural variations in aggregates, colours may vary.

*600 x 400 only available in Vienna and Prague

Euro® Slate

The natural slate appearance of these pavers brings the look and feel of traditional European style to your paved space. Euro® Slate pavers are finished with an undulating pattern replicating natural slate stone.

RECOMMENDED FOR



Courtyards



Paths



Steps



Pool Surrounds



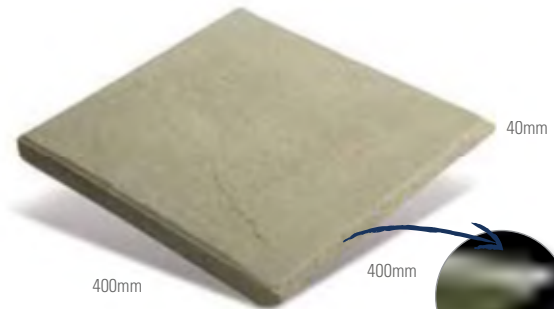
Driveway Safe*

**When laid onto a suitable concrete base.*

AVAILABLE SIZES



Euro® Slate
6.25 units per m²

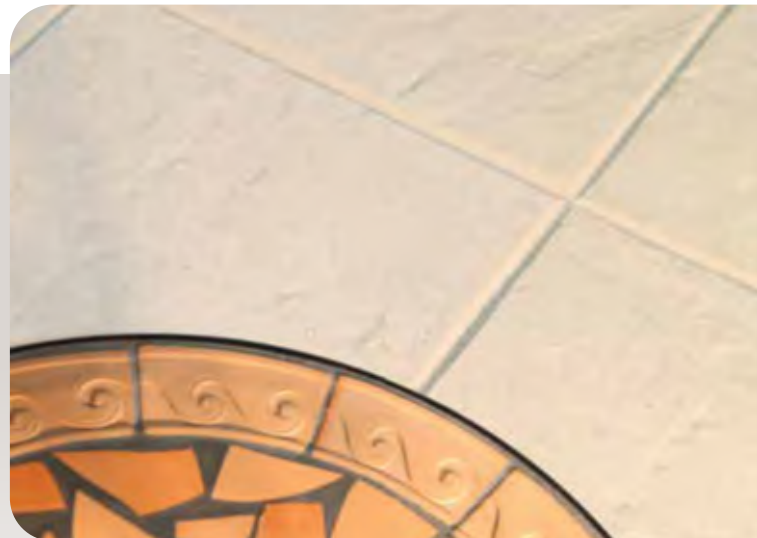


Euro® Slate Sharknose
For pool coping and steps
2.50 units per lineal metre

**This product is made to order, lead times apply.*



Euro® Slate | Prague



COLOUR OPTIONS

ATHENS



PRAGUE



Whilst these swatches provide a good indication of the products colour, you should always sight product samples before use. Due to natural variations in aggregates, colours may vary.

RECOMMENDED FOR



Courtyards



Paths



Steps

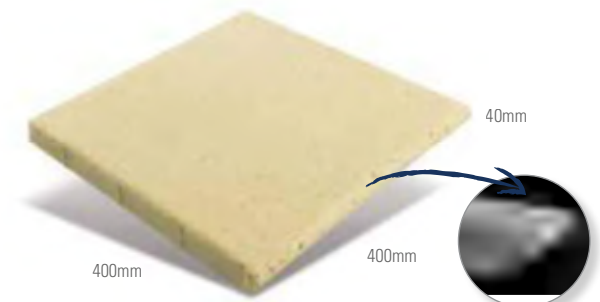
Quadro™

Quadro™ is a functional large format paver which is perfect for DIY projects around the home. Light in weight and easy to install, Quadro™ will enhance your Outdoor Room.

AVAILABLE SIZES



Quadro™
6.25 units per m²



Quadro™ Bullnose
2.50 units per lineal metre

*This product is made to order, min. quantities and lead times apply.



Quadro™ | Charcoal



COLOUR OPTIONS

Whilst these swatches provide a good indication of the products colour, you should always sight product samples before use. Due to natural variations in aggregates, colours may vary.

OATMEAL



SUNSTONE



TERRACOTTA



FOSSIL



CHARCOAL



Stradapave®

This popular concrete paver is great value, easy to lay and an ideal solution for paving patios, paths, entertaining areas and steps.

RECOMMENDED FOR



Courtyards



Paths



Steps



Driveway Safe*

**Stradapave® 50mm only*

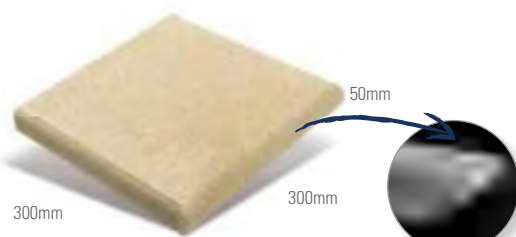
AVAILABLE SIZES



Stradapave® 40
11.1 units per m²



Stradapave® 50
11.1 units per m²



Stradapave® 50 Bullnose
For steps
3.3 units per lineal metre



Stradapave® | Oatmeal

COLOUR OPTIONS

Whilst these swatches provide a good indication of the products colour, you should always sight product samples before use. Due to natural variations in aggregates, colours may vary.

OATMEAL



SALMON



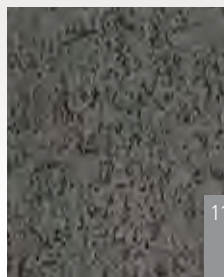
SUNSTONE



BRUSHWOOD



CHARCOAL



Boulevard®

A large paving slab with a traditional smooth, pressed surface, this classic paver is ideal for DIY projects and suitable for alfresco and entertaining areas.

RECOMMENDED FOR

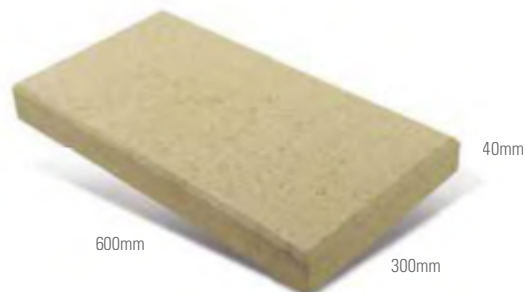


Courtyards



Paths

AVAILABLE SIZES



Boulevard®
5.55 units per m²

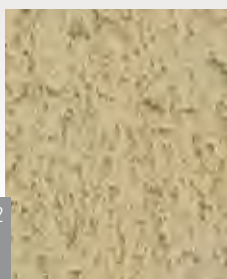


Boulevard® | Sunstone



COLOUR OPTIONS

OATMEAL



SUNSTONE



CHARCOAL



Whilst these swatches provide a good indication of the products colour, you should always sight product samples before use. Due to natural variations in aggregates, colours may vary.

Stradascape®

This large paving slab with a unique rectangular size is easy to lay and can be used to create appealing patterns in the paved areas around your home.

RECOMMENDED FOR

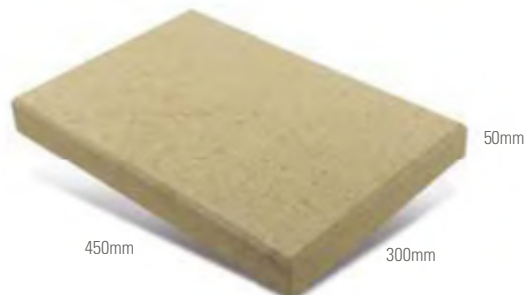


Courtyards



Paths

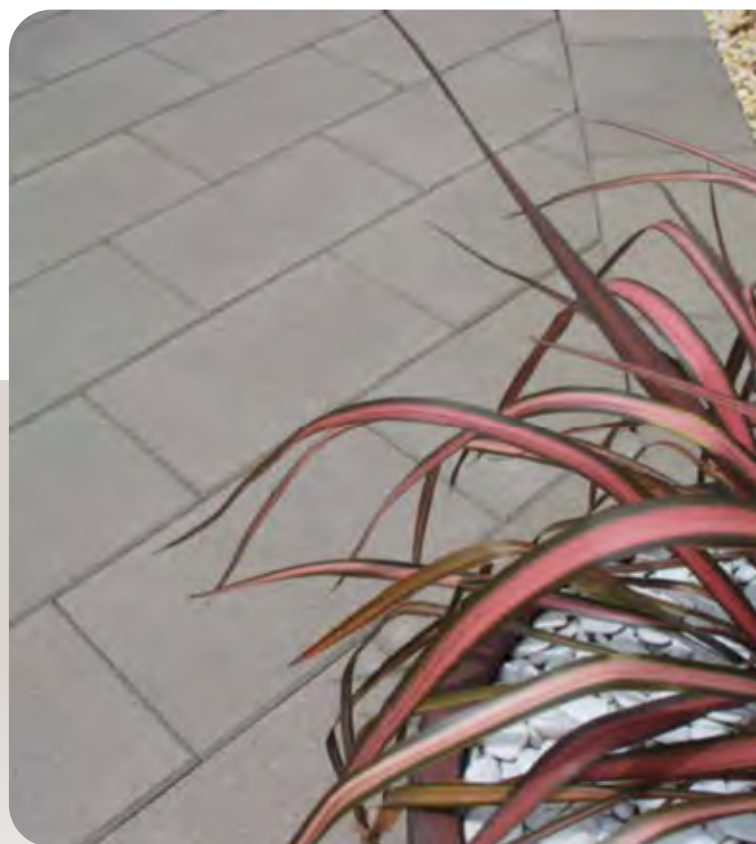
AVAILABLE SIZES



Stradascape®
7.4 units per m²



Stradascape® | Oatmeal

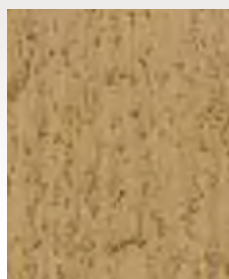


COLOUR OPTIONS

OATMEAL



SUNSTONE



BRUSHWOOD



CHARCOAL



Whilst these swatches provide a good indication of the products colour, you should always sight product samples before use. Due to natural variations in aggregates, colours may vary.

Havenslab®

Create eye catching patterns with this popular rectangular paving slab.

RECOMMENDED FOR



Courtyards



Paths



Driveway Safe

AVAILABLE SIZES



Havenslab®
12.5 units per m²

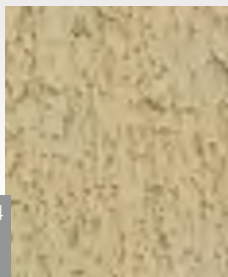


Havenslab® | Charcoal



COLOUR OPTIONS

OATMEAL



SUNSTONE



BRUSHWOOD



CHARCOAL



Whilst these swatches provide a good indication of the products colour, you should always sight product samples before use. Due to natural variations in aggregates, colours may vary.

Havenbrick®

This versatile concrete brick paver is suitable for home DIY projects including patios, garden paths and driveways.

RECOMMENDED FOR



Courtyards



Paths



Driveway Safe

AVAILABLE SIZES



Havenbrick®
50 units per m²



Havenbrick® | Charcoal & Oatmeal



COLOUR OPTIONS

OATMEAL



SUNSTONE



BRUSHWOOD



CHARCOAL



Whilst these swatches provide a good indication of the products colour, you should always sight product samples before use. Due to natural variations in aggregates, colours may vary.

Flagstone

This small square budget paver is a neat and simple solution for DIY paving projects.

RECOMMENDED FOR



Courtyards



Paths

AVAILABLE SIZES



Flagstone
19.4 units per m²



COLOUR OPTIONS

OATMEAL



SUNSTONE



CHARCOAL



Whilst these swatches provide a good indication of the products colour, you should always sight product samples before use. Due to natural variations in aggregates, colours may vary.

Turfgrid™

This land stabilisation paver is a simple solution to control soil erosion around your home. Strong and versatile, Turfgrid™ can also be used for agricultural and industrial applications, including cattle troughs, and is effective for driveways and garden paths where grass is often left muddy after rain.



Turfgrid™ | Natural

RECOMMENDED FOR



Paths



Driveway Safe

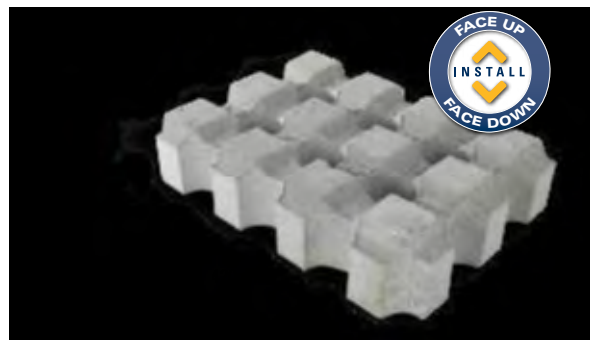


Agricultural



Permeable

AVAILABLE SIZES



Turfgrid™
7.56 units per m²



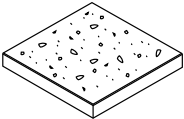
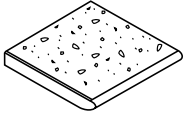
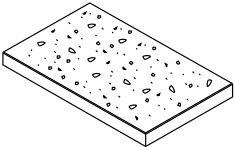
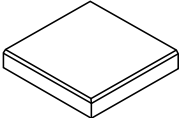
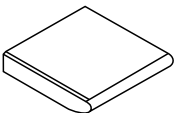
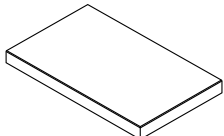
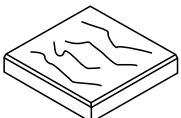
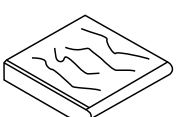
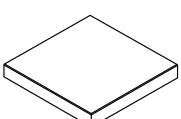
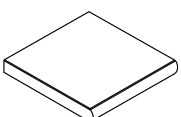
COLOUR OPTIONS

NATURAL



Whilst these swatches provide a good indication of the products colour, you should always sight product samples before use. Due to natural variations in aggregates, colours may vary.

PAVER RANGE

Products	Type	Size (mm) l x d x h	No. per m ²	No. per tonne	No. per pallet	Colours
	Euro® Stone	400 x 400 x 40	6.25	73	108	Prague Riverina Zurich
	Euro® Stone Sharknose	400 x 400 x 40	2.50 L/m	69	108	
	Euro® Stone 600x400	600 x 400 x 40	4.10	49	72	
	Euro® Classic	400 x 400 x 40	6.25	73	108	Athens Cyprus Prague Vienna
	Euro® Classic Sharknose	400 x 400 x 40	2.5 L/m	69	108	
	Euro® Classic 600x400	600 x 400 x 40	4.10	49	72	
	Euro® Slate	400 x 400 x 40	6.25	73	108	Athens Prague
	Euro® Slate Sharknose	400 x 400 x 40	2.5 L/m	69	108	
	Quadro™ 40	400 x 400 x 40	6.25	75	117	Charcoal Fossil Oatmeal Sunstone Terracotta
	Quadro™ 40 Bullnose	400 x 400 x 40	2.5 L/m	75	117	

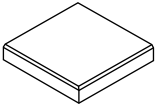
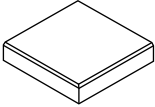
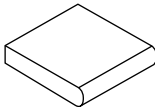
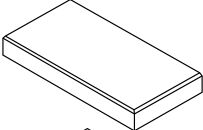
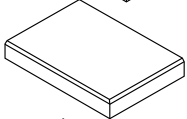
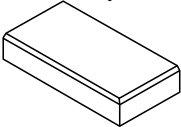
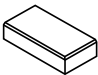
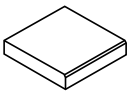
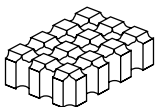
PAVER CARE

PAVING ADVICE

For in depth paving advice, tips and hints please visit our DIY centre at adbrimasonry.com.au/diy or download the CMAA Paving Maintenance Guide from cmaa.com.au.

SEALING

If the pavers are to be used around a swimming pool, or exposed to salt water then Adbri Masonry strongly recommend sealing your paving. We recommend you do this for aesthetic and maintenance purposes, not for structural reasons.

Products	Type	Size (mm) l x d x h	No. per m ²	No. per tonne	No. per pallet	Colours
	Stradapave® 40	300 x 300 x 40	11.1	126	192	Oatmeal Salmon Sunstone Brushwood Charcoal
	Stradapave® 50	300 x 300 x 50	11.1	105	192	
	Stradapave® 50 Bullnose*	300 x 300 x 50	3.3 L/m	106	192	
	Boulevard®	600 x 300 x 40	5.55	52	88	Oatmeal Sunstone Charcoal
	Stradасcape®	450 x 300 x 50	7.4	68	120	Oatmeal Sunstone Brushwood Charcoal
	Havenslab®	400 x 200 x 50	12.5	126	216	Oatmeal Sunstone Brushwood Charcoal
	Havenbrick®	200 x 100 x 50	50	474	864	Oatmeal Sunstone Brushwood Charcoal
	Flagstone	227 x 227 x 40	19.4	217	400	Oatmeal Sunstone Charcoal
	Turfgrid™	420 x 315 x 90	7.56	61	99	Natural

MAINTENANCE

Pavers will require some ongoing maintenance to keep in a pristine condition. Dirt, dust and leaves should regularly be removed whilst any weed growth should be sprayed and controlled.

CLEANING

All pavers will require cleaning from time to time. Oil, rust, efflorescence and other stains can detract from the appearance of the paver. Proprietary cleaning products for concrete pavers (and retaining walls) are readily available.

PAVER INSTALLATION GUIDE

Adbri Masonry Pavers can be laid by two methods; Rigid Installation (with a concrete basecourse) or Flexible Installation (a granular basecourse). Properly constructed rigid pavements can be more stable where soil conditions are poor, (e.g. reactive or poorly drained clay).

Drainage is most important for a successful paving project. Care must be taken to grade the basecourse and the finished pavement level at a minimum gradient of 2% (or 100mm per 5.0 lineal metres). Refer to the CMAA's PA05 document for further drainage details.

The laying of pavers on a sand bed on a concrete slab is not addressed in this

brochure. It can be done, but efflorescence staining can occur on pavers laid in this manner if there is inadequate drainage of the concrete slab.

For further information please refer to: Adbri Masonry Paving Installation Guide at adbrimasonry.com.au and Concrete Masonry Association of Australia (CMAA) Guidelines at www.cmaa.com.au: PA02 Concrete Segmental Pavements - Design Guide for Residential Accessways and Roads, PA05 Concrete Flag Pavements - Design and Construction Guide.

Note: The following is a guide only and in no way replaces the services of a professional design consultant.

FLEXIBLE INSTALLATION

Step 1. Excavation: Excavate your area to allow for a granular* basecourse, (75mm for pedestrian traffic and 175mm for driveways after compaction), plus 20-25mm of washed coarse bedding sand plus the thickness of the paver.

Note: Pavers for driveways should be at least 50mm thick.

**Class A road-base or 20mm graded crushed rock are suitable materials.*

Step 2. Compact the Basecourse: Place the granular basecourse to the desired depth and compact using a vibrating plate machine. Ensure your basecourse is firm and of uniform thickness. If the area needs to be built up then do so in compacted 75mm layers. Up to 5% of cement can be blended in to the granular basecourse for more stability if required.

Step 3. Bedding Course: Spread clean coarse bedding sand over the compacted basecourse to a depth of 20-25mm and screed to a flat even surface.

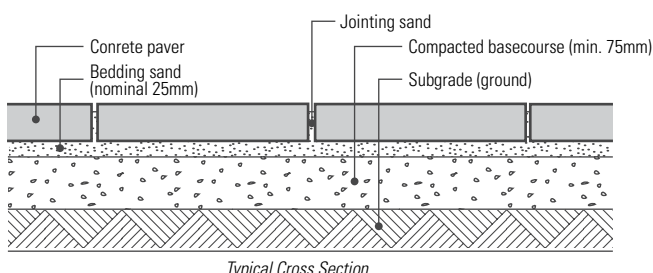
Step 4. Lay the Pavers: Begin laying pavers from one corner, utilising a string line to keep the lines straight. Don't walk on the sand, walk on the pavers already laid.

Step 5. Edging: Edge restraints are essential to prevent lateral movement of the paved area and must be installed prior to the application of the jointing sand. Refer to the Edging section for details.

Step 6. Joints: Adbri Masonry pavers in this application should be laid with a 3 - 5mm gap. Fill this joint with a fine washed sand or specialised jointing sand as the paving proceeds. This will minimise movement in the pavers when compacting.

Step 7. Final Compaction: To compact the pavers place a flat heavy board across the pavers and hit with a rubber mallet. For pavers of 50mm depth or greater, a vibrating plate machine should be used for the best results (more jointing sand should be added as pavers are compacted). It is recommended a piece of carpet be placed under the plate to protect the pavers from chipping.

Flexible Installation



Typical Cross Section

RIGID INSTALLATION

Step 1. Excavation: Excavate your area to allow for a 75mm thick, (or 100mm for a driveway) concrete slab, (rough screeded 20MPa grade with SL82 reinforcement at 30mm and contraction joints at 3 metre centres), plus 15-25mm of mortar plus the thickness of the paver.

Note: Pavers for driveways should be at least 50mm thick. The concrete should be wet cured for at least 7 days before laying. 100mm driveway slab is only applicable for vehicles <1.5tonne. Any vehicle loads exceeding this will require an independent slab design to be completed.

Step 2. Apply the Bond Coat: Prepare a cement slurry by mixing 6 parts fine washed sand to 1 part cement. Apply a thin coat (about 1mm) to the working area of the slab with a broom and to the underside of each Adbri Masonry paver just prior to laying.

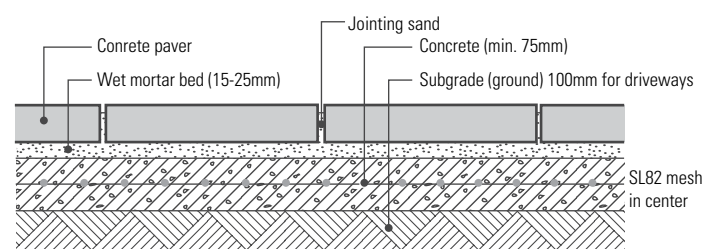
Step 3. Lay the Pavers: Using a string line to keep the lines straight, lay the pavers on a wet mortar bed of 15-25mm thickness. Mortar should be mixed at a ratio of 3 parts washed concrete sand to 1 part cement. Do not make the mortar too wet. The mortar should be stiff enough to make a fist sized ball which holds its shape. Pavers should be laid to form a smooth finished surface by using a level and lightly tapping with a rubber mallet.

Note: Do not add extra water to retemper any stiffening mortar. Make a fresh batch instead; enough to last 30 - 45 minutes laying.

Step 4. Joints: Adbri Masonry pavers should be laid with a 3mm-10mm joint between the units. Joints 3mm-5mm in width shall be filled with a jointing sand. For wider joints, it is recommended that a non shrink grout be used.

Notes: Do not bridge pavers over the contraction joints in the concrete. Pavers must be cut and the joints filled with a flexible compound as per Engineers specifications. If any mortar is spilled on the pavers during installation remove immediately using a clean sponge and water. Do not traffic finished pavement for 72 hours.

Rigid Installation



Typical Cross Section

PAVER CUTTING

You will generally find that some cutting of pavers will be required to fit into specific areas. An angle grinder with a masonry blade is suitable for good results. On jobs where a high number of cuts are required or the paving units are large, it is easier to hire a brick saw with a diamond blade - remember ear muffs, eye protection and a mask.

EDGING

It is important to have a good edge restraint to stop the pavers from spreading and to ensure that the bedding sand is not washed away. Here are two general techniques.

By embedding a paver on edge in concrete

By embedding the outside paver in concrete to approximately half the height of the paver and back filling with suitable garden material

SWIMMING POOLS

- > Adbri Masonry pavers meet Australian slip resistant standards, making them ideal for swimming pool surrounds.
- > Adbri Masonry pavers while being strong and durable have a soft feel, making them comfortable under bare feet or for sitting along pool edges.
- > Adbri Masonry manufacture some pavers specifically for salt resistant applications, necessary for around salt chlorinated swimming pools. This range varies between States so please consult your local Adbri Masonry distributor or Adbri Masonry product guide for specific localised advice.
- > Adbri Masonry recommend sealing pavers likely to be subjected to salt attack.

MAINTENANCE

Pavers will require some ongoing maintenance to keep looking in a pristine condition. Dirt and dust should regularly be removed whilst any weed growth should be sprayed and controlled. Ants should not be allowed to nest in base materials.

CLEANING

All pavers will require cleaning from time to time. Oil, rust, efflorescence and other stains can detract from the appearance of the paver. Proprietary cleaning products for concrete pavers (and retaining walls) are readily available. Please contact your local distributor or Adbri Masonry for further information. Do not use Hydrochloric Acid.

SEALING

If a more protective surface is required then Adbri Masonry suggest you seal your paving. There are a number of sealers specifically for concrete paving so please contact your local distributor or Adbri Masonry for further information.

Note: All coloured product should be ordered at the one time to reduce the risk of batch variation. No claims will be accepted once product has been installed.

How many pavers will you need? Using the helpful diagrams below, measure the desired space you would like to pave. This will give you a total square meter figure ($\text{Length(m)} \times \text{width (m)} = \text{area (m}^2\text{)}$).
TIP: You can check out the paving calculator at www.adbrimasonry.com.au/calculator to see how many pavers you will need for your area.

For rectangular areas

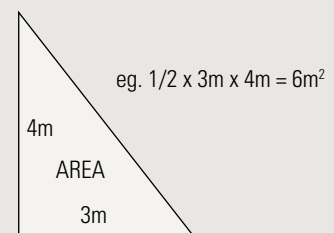
$$\text{base(m)} \times \text{height(m)} = \text{area(m}^2\text{)}$$



$$\text{eg. } 3\text{m} \times 5\text{m} = 15\text{m}^2$$

For triangular areas

$$1/2 \times \text{base(m)} \times \text{height(m)} = \text{area(m}^2\text{)}$$



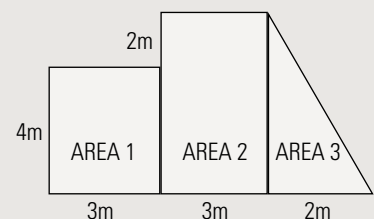
For odd shaped areas - break into sections

$$\text{Area 1: } 4\text{m} \times 3\text{m} = 12\text{m}^2$$

$$\text{Area 2: } 6\text{m} \times 3\text{m} = 18\text{m}^2$$

$$\text{Area 3: } 1/2 \times 6\text{m} \times 2\text{m} = 6\text{m}^2$$

$$\text{Total area to be paved} = 36\text{m}^2$$



DIY with Adbri

1

CHOOSE PRODUCT



Select a paver by browsing through this catalogue or searching online at adbrimasonry.com.au

2

CALCULATE QUANTITY



Calculate the amount of pavers you require with our easy online calculator. **Visit adbrimasonry.com.au.**



Order 5% more for every paving project to account for cuts.



4 Simple Steps ...

3

SELECT LAYING PATTERN

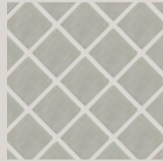
SQUARE PAVERS



Stackbond



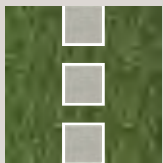
Stretcherbond



45° Stackbond

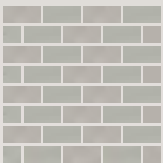


45° Stackbond
with header course

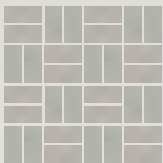


Step Stones

RECTANGULAR PAVERS



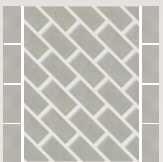
Stretcherbond



Basketweave



Herringbone



45° Stretcher
with header course



45° Herringbone
with header course

4

LAY YOUR PAVERS



STEP BY STEP VIDEO GUIDES

For a complete step by step set of laying instructions including PDF download and DIY videos visit our website at adbrimasonry.com.au/diy



For DIY videos, hint and tips as more inspirational ideas visit adbrimasonry.com.au
Let's do a project

DIY
WITH ADBRI





BRICKS | BESSER® BLOCKS | PAVERS | RETAINING WALLS

Contact Us



adbrimasonry.com.au



1300 365 565



enquiries@adbri.com.au

Free pallet collection service freecall 1800 674 961 or drop pallets back to place of purchase or lodge your pallet pick up online at adbrimasonry.com.au

Pallets remain Adbri Masonry property. Please telephone us for collection of pallets and keep pallets empty and stacked in a safe and accessible area for collection.

Paving Landscape Solutions

NSW - May 2020

ABM2042

Adbri Masonry Pty Ltd

ABN: 31 009 687 521

Boulevard®, Euro®, Havenbrick®, Havenslab®, Quadro™, Stradapave®, Stradascap®, Turfgrid™ and the Adbri Masonry logo are registered trademarks of Adbri Masonry Pty Ltd.

Follow us on Social Media



[AdbriMasonryAus](#)



[AdbriMasonryAus](#)



[Adbrimasonry](#)



[Adbrimasonry](#)



[AdbriMasonryAus](#)

adbriMASONRY
working together